

JOINT REGIONAL COMMUNICATIONS CENTRE (JRCC)



SPECIAL SECURITY CONCERNS OF SMALL ISLAND STATES OF THE CARIBBEAN

A PRESENTATION ON ENHANCING BORDER
CONTROL MEASURES
BY
CAPT MICHAEL JONES
DIRECTOR (AG) JRCC

ADVANCE PASSENGER INFORMATION SYSTEM

MARCH 25, 2010

WASHINGTON D.C.



APIS, ACIS, CARIPASS, E-APIS RIBIN



CONFIDENTIAL



INTRODUCTION

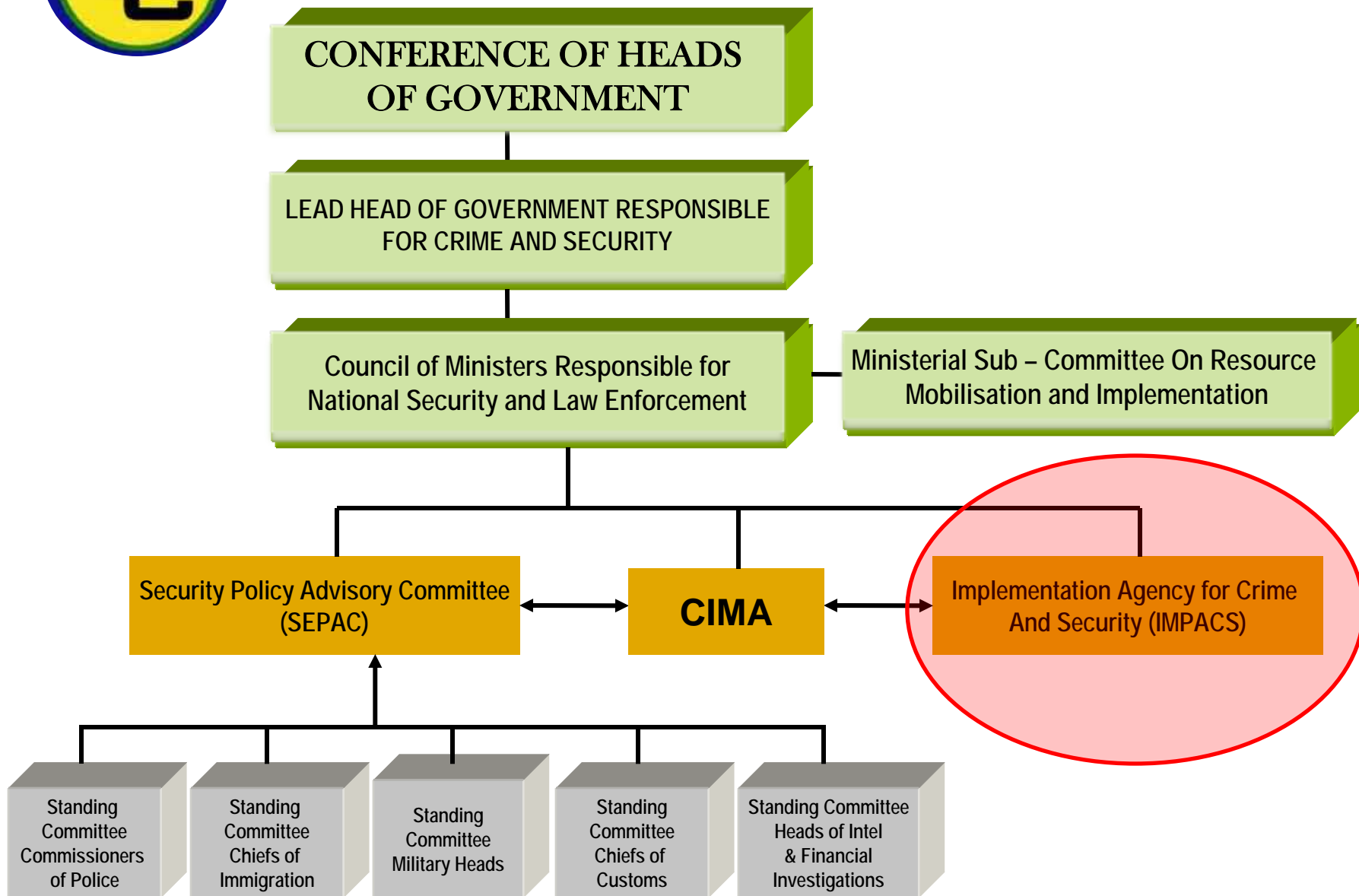


- HISTORICAL PERSPECTIVE OF REGION'S SECURITY FRAMEWORK
- THE JRCC AND ITS RELATIONSHIPS
- IMPLEMENTED BORDER SECURITY INITIATIVES - APIS
- CHALLENGES WITH THE CURRENT SYSTEM
- INITIATIVES FOR IMPLEMENTATION
- THE WAY FORWARD



CARICOM FRAMEWORK

FOR THE MANAGEMENT OF CRIME AND SECURITY – JULY 2005



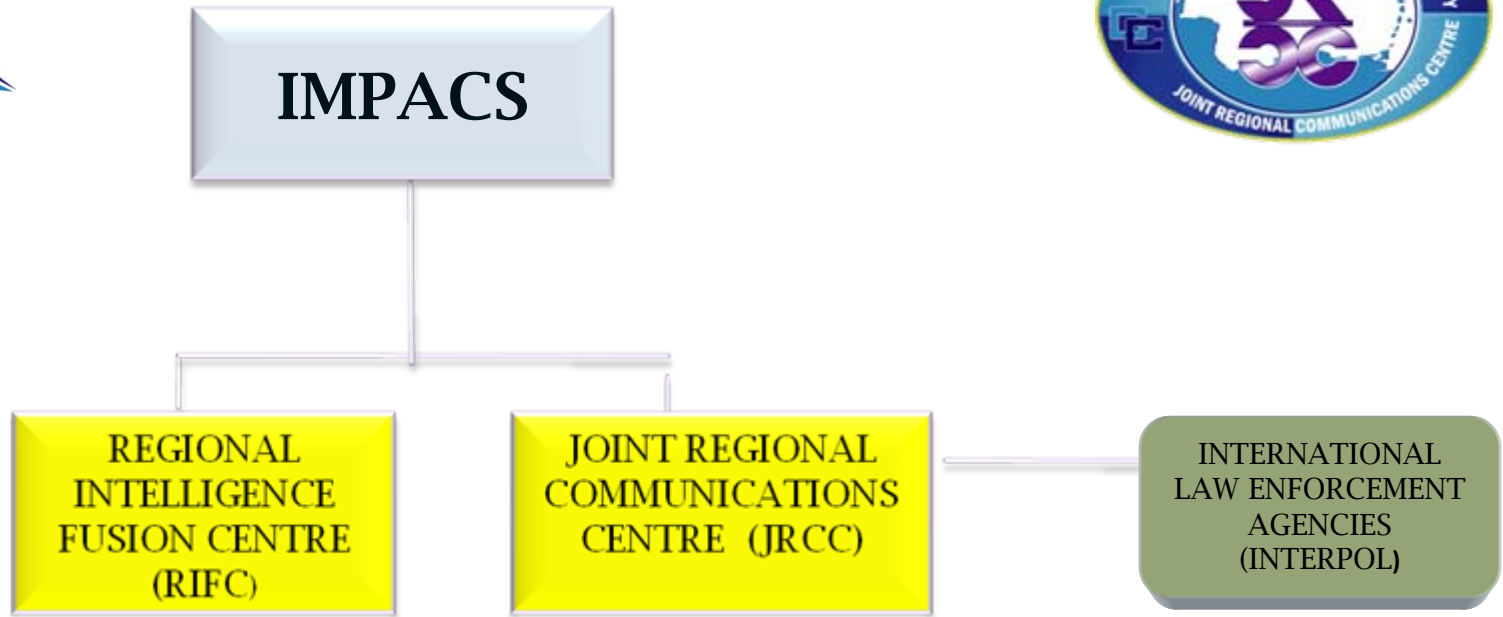


ESTABLISHMENT OF THE JRCC



The Twenty Seventh Meeting of the Conference of Heads of Government which was held in St. Kitts and Nevis in July 2006 agreed to the creation and establishment of the Joint Regional Communications Centre (JRCC)

IMPLEMENTATION AGENCY FOR CRIME & SECURITY (IMPACS)





ADVANCED PASSENGER INFORMATION SYSTEM (APIS)



The Advanced Passenger Information System (APIS) is an automated system established to provide data prior to the arrival and departure of an aircraft or vessel at each port of entry in participating Member States. It contains a complete list of persons (crew and Passengers) on board including their biographic data and carrier information.

The ten (10) participating Member States of APIS are Antigua & Barbuda, Barbados, Dominica, Grenada, Guyana, Jamaica, St. Kitts & Nevis, Saint Lucia, ST. Vincent & the Grenadines and Trinidad & Tobago.

The participating Member States have enacted Legislation which requires all commercial air and sea carriers operating inbound and outbound to electronically transmit APIS data on all passengers and crew members to the Joint Regional Communications Centre (JRCC)

Cross checks all API data and visa applicants requests against the Regional Watchlist Database and INTERPOL Databases



Transmission Methods



A commercial service provider can be used through which APIs are submitted to the Centre.



eAPIS is a web-based application that provides carriers with an alternative means of uploading and transmitting the passenger and crew information



Web Service is offered to upload and transmit the APIS information electronically



Data Formats Used



UN-EDIFACT PAXLST (Crew and Passenger Information). A file with “.edi” extension maybe submitted through any of the transmission methods listed above.



XML File (utilizing CARICOM XML Schema)
Contact JRCC via:
apis-support@impacsjrcc.org

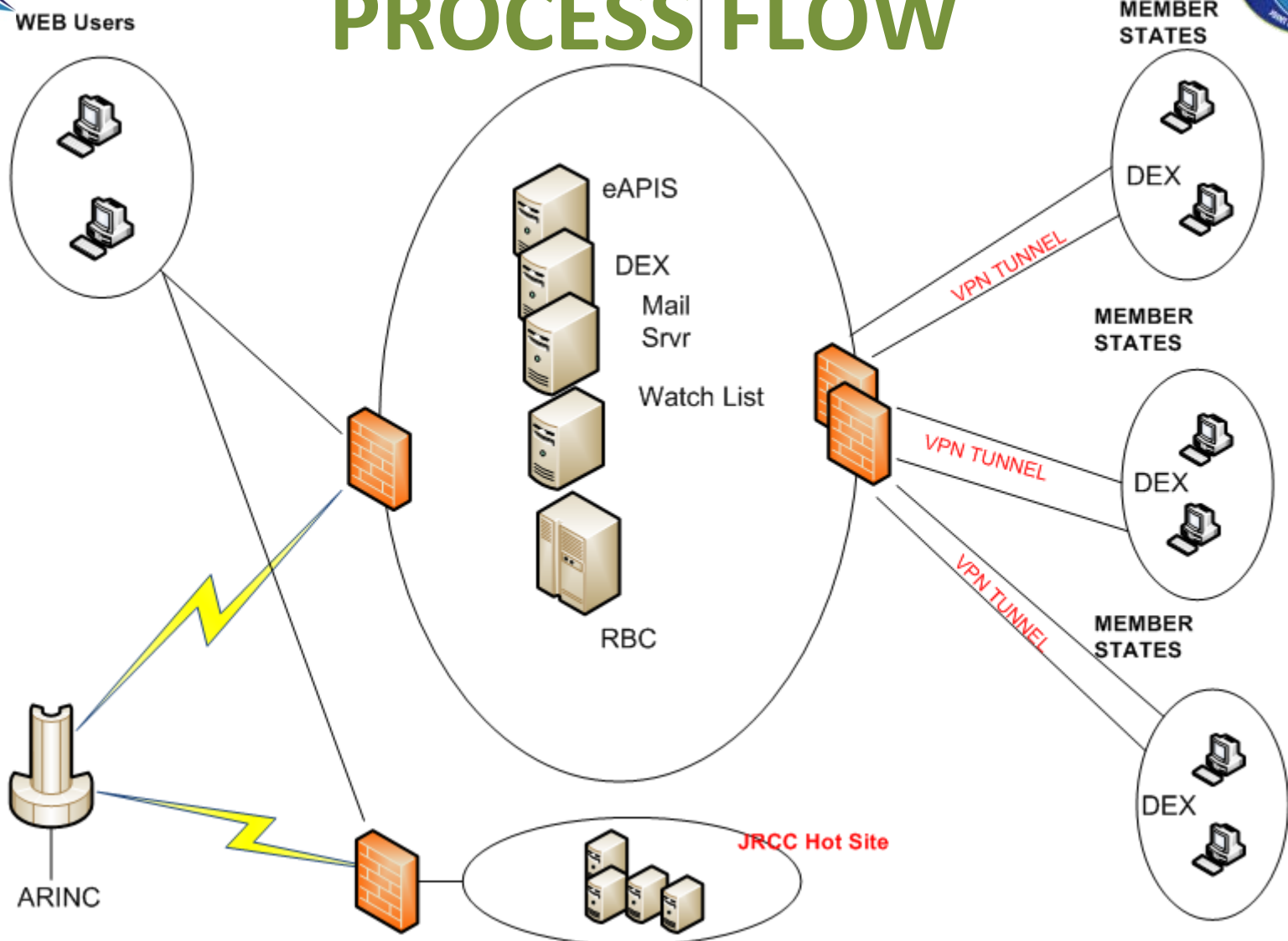


XLS Spreadsheet (ONLY the JRCC downloadable spreadsheet available at www.caricomeapis.org

Carriers using this method are required to register first.



PROCESS FLOW





CHALLENGES WITH THE CURRENT SYSTEM



- There is not full participation of all 15 CARICOM states in the APIS.
- Variation in API Legislation amongst participating Member States
- Quality of data transmitted by carriers
- Caveats and Exemptions for yachtsmen
- Enforcement of Legislation by participating Member States



SUCCESSSES TO DATE



- **TOTAL PASSENGERS SCRUBBED**

2007	2008	2009	2010 to date
9,552,641	14,972,554	19,614,800	

- **TOTAL NUMBER OF HITS**

2007	2008	2009	2010 to date
2,720	1,381	1,108	



SUCCESSSES TO DATE CONT'D



- **SIGNIFICANT HITS FOR 2010 TO DATE:**

1. Four (4) Swedish nationals were detained and handed over to INTERPOL Trinidad & Tobago for possession of fraudulent travel documents and suspicion of human trafficking on January 10, 2010.

2. A CARICOM national was subsequently arrested after being interviewed, admitted to possession and excreted packets of marijuana on February 16, 2010.



INITIATIVES FOR IMPLEMENTATION



- **CARIPASS**

- **ACIS**

- **RIBIN**



THE WAY FORWARD



- **SYSTEMS CONSOLIDATION**
- **EXPLORATION OF SELF-FINANCING OPPORTUNITIES**
- **KNOWLEDGE OF THE (SECURITY) GROUPING SYSTEM**
- **ADVANCED PASSENGER PROCESSING**



JRCC OPERATIONS – MONTHLY COMPLIANCE RATIOS FOR MARITIME CARRIERS (actuals)



MEMBER STATES	JAN %	FEB %	MAR %	APR %	MAY %	JUN %	JUL %	AUG %	SEPT %	OCT %	NOV %	DEC %
ANTIGUA	68	50	58	42	53	42	72	82	82	74	83	90
BARBADOS	LNA	20	LNA	LNA	69	67	96	87	91	87	86	92
DOMINICA	LNA	LNA	LNA	LNA	LNA	LNA	LNA	LNA	LNA	LNA	LNA	LNA
GRENADA	40	50	75	49	LNA	71	85	77	81	57	88	93
GUYANA	LNA	LNA	LNA	LNA	45	41	54	63	56	64	64	67
JAMAICA	LNA	LNA	LNA	16	51	56	83	77	87	87	89	88
ST. KITTS	LNA	LNA	LNA	LNA	LNA	LNA	LNA	LNA	LNA	LNA	LNA	LNA
ST. LUCIA	70	62	100	LNA	LNA	LNA	70	82	60	37	78	66
ST. VINCENT	25	LNA	LNA	LNA	LNA	LNA	LNA	LNA	LNA	LNA	LNA	45
TRINIDAD	30	80	82	12	28	23	29	26	41	45	48	49



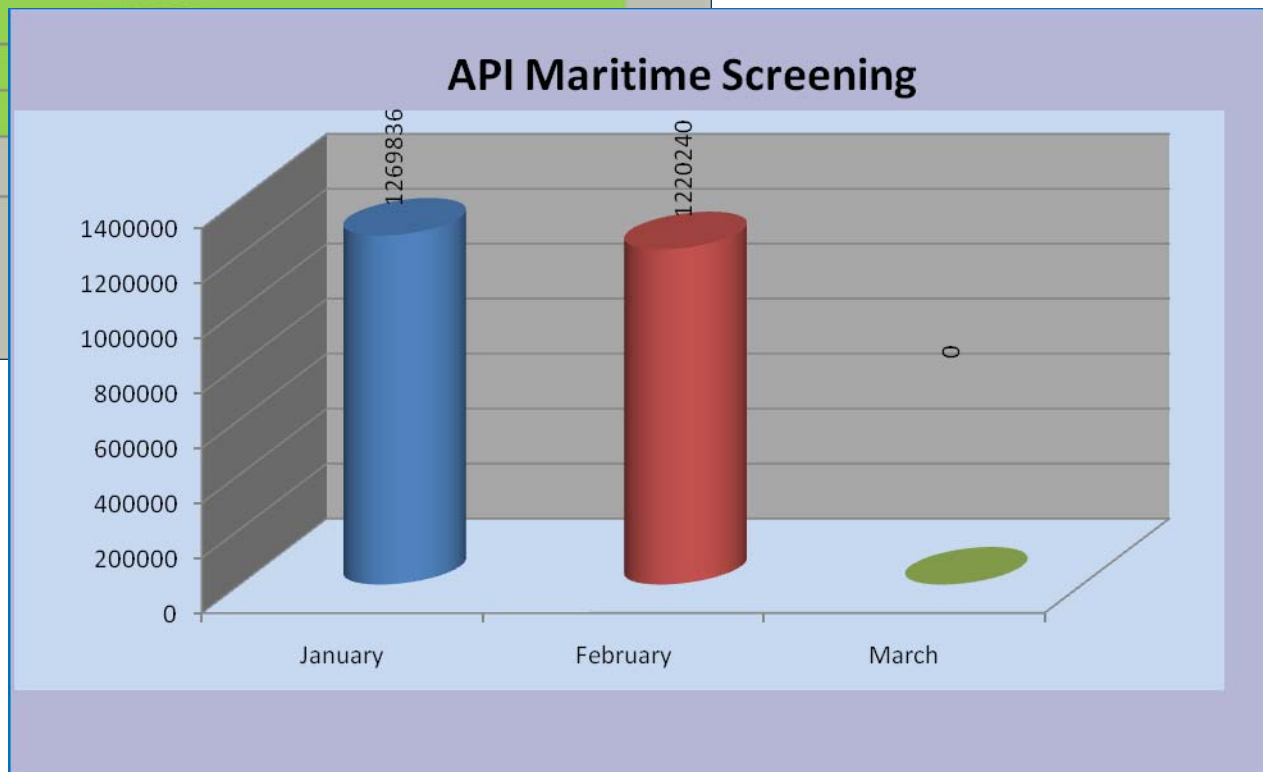
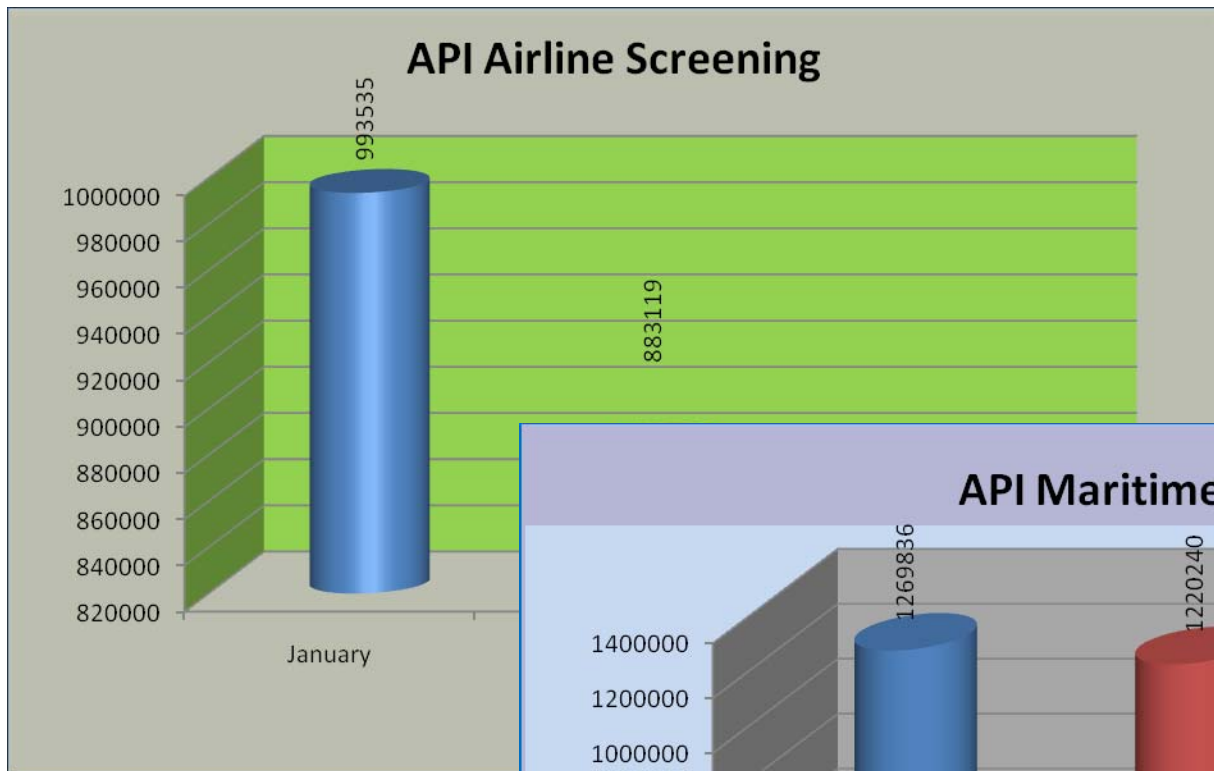
JRCC OPERATIONS – MONTHLY COMPLIANCE RATIOS FOR AVIATION CARRIERS (actuals)



MEMBER STATES	JAN	FEB	MAR	APR	MAY	JUN	JUL	AUG	SEPT	OCT	NOV	DEC
										%		
ANTIGUA	71	78	76	77	82	82	83	84	87	88	89	83
BARBADOS	LNA	LNA	LNA	79	88	90	90	86	94	91	90	89
DOMINICA	LNA	LNA	LNA	LNA	LNA	LNA	LNA	LNA	LNA	LNA	LNA	LNA
GRENADA	78	73	78	79	82	83	87	84	90	89	91	87
GUYANA	LNA	52	58	71	76	79	82	83	79	77	79	82
JAMAICA	LNA	79	83	83	81	86	88	87	87	85	90	89
ST. KITTS	75	75	79	76	82	83	85	89	88	90	89	81
ST. LUCIA	75	75	70	79	79	81	86	80	90	90	89	91
ST. VINCENT	LNA	LNA	LNA	LNA	LNA	59	68	66	77	80	83	83
TRINIDAD	LNA	80	82	80	90	91	92	91	92	92	95	93

RESTRICTED

APIS OPERATIONS – JANUARY – MARCH 17 2010



RESTRICTED



THANK YOU



Contact

Captain Michael Jones
Director (Ag)
1 246 826 2356
m.jones@impacsjrcc.org

CP24010T